

# ClampCo

AUTOMOTIVE WORKSHOP SUPPLIES

**FREE**  
DELIVERY ON ALL  
ORDERS OVER £25\*

## TYRE SHOP PROMOTION

JULY 1ST - NOVEMBER 30TH 2015

**WE CAN SAVE  
YOU OVER**

**75%**

### Steel Wheel Balance Weights



### Alloy Wheel Balance Weights

ORDER CODE	SIZE	BOX QTY	NORMAL PRICE	NOW ONLY
BW1Z	5G	100	<del>£5.95</del>	<b>£1.67</b>
BW2Z	10G	100	<del>£7.50</del>	<b>£3.29</b>
BW3Z	15G	100	<del>£9.75</del>	<b>£4.85</b>
BW4Z	20G	100	<del>£10.95</del>	<b>£6.47</b>
BW5Z	25G	100	<del>£12.50</del>	<b>£8.09</b>
BW6Z	30G	100	<del>£13.50</del>	<b>£8.90</b>
BW7Z	35G	50	<del>£8.75</del>	<b>£5.39</b>
BW8Z	40G	50	<del>£9.75</del>	<b>£5.99</b>
BW9Z	45G	50	<del>£10.55</del>	<b>£6.71</b>
BW9AZ	50G	50	<del>£11.95</del>	<b>£8.15</b>

ORDER CODE	SIZE	BOX QTY	NORMAL PRICE	NOW ONLY
BW31Z	5G	100	<del>£7.95</del>	<b>£1.71</b>
BW32Z	10G	100	<del>£10.95</del>	<b>£3.29</b>
BW33Z	15G	100	<del>£11.95</del>	<b>£4.85</b>
BW34Z	20G	100	<del>£13.95</del>	<b>£6.26</b>
BW35Z	25G	100	<del>£15.50</del>	<b>£7.16</b>
BW36Z	30G	100	<del>£17.25</del>	<b>£8.73</b>
BW37Z	35G	50	<del>£9.75</del>	<b>£4.86</b>
BW38Z	40G	50	<del>£10.95</del>	<b>£5.49</b>
BW39Z	45G	50	<del>£11.50</del>	<b>£5.94</b>
BW40Z	50G	50	<del>£11.95</del>	<b>£8.01</b>

Think  
Tyre Repair...

Think  
ClampCo!

### Snap-In Tyre Valves

TUV Certified Rubber/Chrome  
Tyre Valves



ORDER CODE	DESCRIPTION	QTY	PRICE
E412	22mm Length	100	<b>£8.99</b>
E413	30mm Length	100	<b>£8.99</b>
E414	38mm Length (Short)	100	<b>£6.25</b>
E414C	38mm Length (Chrome)	100	<b>£15.99</b>
E415	32mm Length (Fat)	100	<b>£10.99</b>
E418	49mm Length (Long)	100	<b>£8.28</b>
E418C	49mm Length (Chrome)	100	<b>£15.99</b>
TY121	Nickel Plated Tyre Valve Cores	100	<b>£12.99</b>
ETP22	Plastic Tyre Valve Dust Caps	100	<b>£1.10</b>

**BEST  
PRICES  
IN THE UK!**



1 BOX  
**£9.99**

5 BOXES  
**£7.99**  
PER BOX

### Self Adhesive Balance Weights

100 Pack. 60g per strip in 5g & 10g sections.

Order Code: BW30

ORDER NOW BY PHONE OR ONLINE  
**0161 476 0900**  
**www.clampcouk.co.uk**

All Prices Exclude VAT. See Website for Full Terms & Conditions

## Tyre Repair Chemicals

Lubricants, sealants, mounting pastes and vulcanisers.



	ORDER CODE	DESCRIPTION	PRICE
A	EBD1	5Kg Water-based Tyre Bead Paste	<b>£3.99</b>
B	EBD2	5Kg Wax-based Tyre Bead Paste	<b>£7.99</b>
C	EBD3	5Kg Orange Wheel Sealant	<b>£13.99</b>
D	EBD5	5Kg Black Tyre Mounting Paste	<b>£6.99</b>
E	ETC1	235ml Blue Tyre Cement Vulcaniser	<b>£2.39</b>
F	ETC2	235ml Inner Tyre Liner Sealant	<b>£4.99</b>
G	ETC3	235ml Clear Tyre Vulcanising Solution	<b>£2.25</b>
H	ETC4	1 Litre Liquid Tyre Buffer Solution	<b>£3.99</b>
I	ETC5	400ml Aerosol Tyre Buffer Solution	<b>£2.99</b>
J	ETC6	945ml Black Tyre Bead Sealant	<b>£6.35</b>
K	ETC7	500ml Tyre Leak Finder	<b>£1.99</b>
L	ETC10	5 Litre Tyre Bead Lubricant Fluid	<b>£3.99</b>

## Puncture Repair Plugs



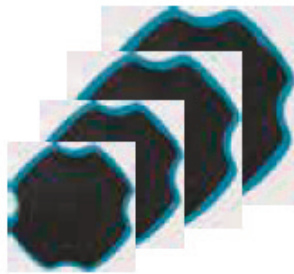
ORDER REF	DESCRIPTION	QTY	PRICE
ETR2	3mm Plugs	40	<b>£15.08</b>
ETR3A	6mm Plugs	24	<b>£7.35</b>

## Radial Tyre Patches



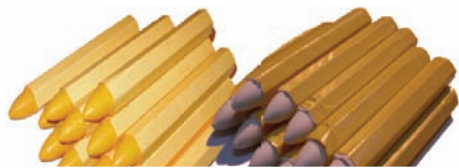
ORDER REF	SIZE	QTY	PRICE
ETR15	55 x 75mm	20	<b>£3.79</b>
ETR16	80 x 125mm	10	<b>£4.00</b>

## Bias Tyre Patches



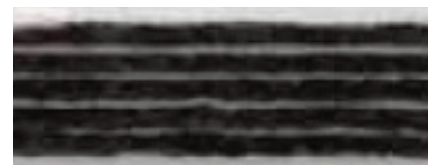
ORDER REF	SIZE	QTY	PRICE
ETR20	105 x 105mm	2	<b>£3.90</b>
ETR21	135 x 135mm	2	<b>£5.79</b>
ETR22	175 x 175mm	4	<b>£8.38</b>

## Tyre Marking Chalk



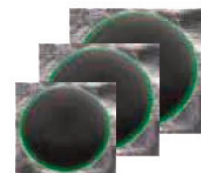
ORDER REF	COLOUR	QTY	WAS PRICE	NOW PRICE
ETP21	Yellow	12	<del>£4.99</del>	<b>£2.99</b>
ETP21W	White	12	<del>£4.99</del>	<b>£2.99</b>

## PVC Covering



ORDER REF	SIZE	QTY	PRICE
ETR25	8" (6mm Dia)	25	<b>£2.32</b>

## Universal Repair Patches



ORDER REF	SIZE	QTY	PRICE
ETR7	40mm	100	<b>£5.10</b>

## Inner Tube Patches



ORDER REF	SIZE	QTY	PRICE
ETR8	40mm	25	<b>£2.60</b>
ETR9	52mm	16	<b>£1.99</b>



### Tyre Valve Tools

ORDER CODE	DESCRIPTION	PRICE
ETP2A	Plastic Tyre Valve Core Puller	<b>£1.10</b>
ETP3	Double-Ended Valve Screw Driver	<b>£0.85</b>
ETP5	Snap-In Tyre Valve Tool	<b>£2.89</b>
TST/VT	3-In-1 Tyre Valve Service Tool	<b>£2.49</b>



### Tyre Valve Knives

ORDER CODE	DESCRIPTION	PRICE
ETP18	Flat-Ended Tyre Valve Knife	<b>£1.10</b>
ETP18C	Curve-Ended Tyre Valve Knife	<b>£0.85</b>
ETP18F	Fold-Away Tyre Valve Knife	<b>£2.89</b>



### Tyre Repair Tools

ORDER CODE	DESCRIPTION	PRICE
ETP4	'Golf Ball' Tyre Buffing Wheel	<b>£3.10</b>
ETP7	80 Grit Flap Buffing Wheel	<b>£2.05</b>
ETP8	6mm Tyre Mill Cutter	<b>£7.99</b>
ETP8A	3mm Tyre Mill Cutter	<b>£7.99</b>
ETP9	Tyre Patch Roller/Stitcher	<b>£2.99</b>
ETP13	'T' Handle Hand Rasp	<b>£1.49</b>
ETP14	Pistol Grip Hand Reamer	<b>£1.49</b>
ETP15	Screwdriver Type Hand Rasp	<b>£1.99</b>
ETP16	Inner Tyre Liner Rubber Scraper	<b>£1.99</b>
TY163	Bead Paste Tyre Brush	<b>£0.99</b>



### Tyre Testing Bath & Stand

Fabricated steel stand with a toughened plastic bath.  
Order Code: ETP20

ONLY  
**£180.00**



### Cheetah Bead Seater

Easy to use on car, ATV and commercial tyres.  
Order Code: ETP19

ONLY  
**£170.00**



### Drop Forged Steel Tyre Levers

ORDER REF	SIZE	PRICE
TYL12	12" (300mm)	<b>£1.99</b>
TYL16	16" (400mm)	<b>£2.99</b>
TYL18	18" (450mm)	<b>£2.99</b>
TYL1	20" (500mm)	<b>£2.99</b>
TYL2	24" (600mm)	<b>£2.99</b>



### Fastyre Labels x 1000

Self-adhesive foil-backed white stickers on a roll.  
Order Code: ETP25

ONLY  
**£15.00**



### Wheel Balance Weight Tools

ORDER REF	DESCRIPTION	PRICE
ETP1	Weight Pliers	<b>£7.50</b>
ETP17	Weight Remover	<b>£3.50</b>



### Drop Forged Steel Tyre Lever - Twin Pack

Order Code: TYL3

ONLY  
**£5.99**



0161 476 0900



0161 476 3600



sales@clampcouk.co.uk



www.clampcouk.co.uk



**ALL PRICES INCLUDE DELIVERY,  
INSTALLATION AND TRAINING  
BY FULLY QUALIFIED ENGINEERS**

**AS944 with SUPER RM**

AS944 is a super-automatic tyre changer for car, racing and van wheels.



- ONLY **£20.55** PER WEEK\*
- 10" - 24"
- BUY NOW **£3,995.00** EX VAT
- 1040mm
- 14"
- 274KG

**AS924 with SRM300**

AS924 is a super-automatic tyre changer for car, racing and van wheels.



- ONLY **£19.01** PER WEEK\*
- 10" - 24"
- BUY NOW **£3,695.00** EX VAT
- 1100mm
- 14"
- 234KG

**SUPER RM**



INCLUDED WITH  
**AS944**

**SL322 with SRM300**

Automatic tyre changer for cars, vans and motorcycles.



- ONLY **£11.81** PER WEEK\*
- 10" - 24"
- BUY NOW **£2,295.00** EX VAT
- 1140mm
- 14"
- 255KG

**SRM300**



INCLUDED WITH  
**AS924**

INCLUDED WITH  
**SL322**

**SL122**

Semi-automatic tyre changer for passenger cars, light transport vehicles, motorcycles and scooters.



- ONLY **£7.02** PER WEEK\*
- 10" - 24"
- BUY NOW **£1,365.00** EX VAT
- 1140mm
- 14"
- 225KG

**FULL UK  
COVERAGE  
AND  
WARRANTY**

**SERVICE  
CONTRACT  
AVAILABLE**



## Universal Abutment Mat



ONLY  
**£19.99**

Order Code: CL302251



### STARTLINE 640

Electronic wheel balancer with display for cars, light-weight transport vehicles and motorcycles.

ONLY  
**£7.02**  
PER WEEK\*

BUY NOW  
**£1,365.00**  
EX VAT

1" - 35"



1.5" - 20"



1110mm



580mm



MAX WHEEL  
WEIGHT 70KG



### MT3350

Electronic wheel balancer with display for passenger cars, light transport vehicles and motorcycles.

ONLY  
**£12.84**  
PER WEEK\*

BUY NOW  
**£2,495.00**  
EX VAT

1" - 35"



1.5" - 20"



1117mm



600mm



MAX WHEEL  
WEIGHT 75KG



Width gauge TL2 is an optional extra and available upon request

## 12 MONTH WARRANTY

Prices subject to change without prior notification and are correct at time of going to press.

Payment options are subject to status. Harvie reserves the right to withdraw payment options without prior notification.

\*Lease period 60 months initial payment is one month payment followed by 59 monthly payments, commencing one month from the delivery of the equipment.

Lease rates are indicative only.

WHILE STOCKS LAST

### MT3400

Designed to work with vehicle wheels up to a max diameter of 1118mm and combined with special accessories, off-road vehicles, vans, motorcycles and closed rims.

ONLY  
**£16.72**  
PER WEEK\*

BUY NOW  
**£3,250.00**  
EX VAT

1" - 35"



1.5" - 20"



1118mm



600mm



MAX WHEEL  
WEIGHT 75KG





# PROLINE 422 LL

**£3549**  
**£19 PER WEEK**

- Leverless automatic tyre changer for rims up to 22".
- Automatic tyre changer with 22" turntable. Inside and outside clamps are totally protected by plastic guards (supplied as standard) to prevent damages to alloy rims.
- Available in one-speed motor version and in 2V version with two-speed motor, with or without T.I. tubeless inflating device too.
- Air operated tilting of column.
- Mechanical balancing and air locking of tool-holder.

Power supply	400 / 3 / 50 400 / 3 / 50 2V 200-230 / 1 / 50 200-230 / 3 / 60 2V
Inside clamping capacity	12" ÷ 24"
Outside clamping capacity	10" ÷ 22"
Bead-breaking power (blade)	12.000 N
Bead-breaker opening	400 mm
Max. wheel diameter	1100 mm (43")
Max. wheel width	350 mm (14")
Working pressure	8 ÷ 10 bar
Max. chuck rotation torque	1100 Nm
Two speeds motor (2V)	0,9/1,2 kW
Single speed motor	0,75 kW
Weight machine	295 Kg
Noise level when running	< 70 dB (A)
Maximum dimensions l x d x h	1350x1850x2040 mm



**FOR THE FULL RANGE OF CORGHI SPARES AND ACCESSORIES - CALL OUR US ON 0161 476 0900**



**FREE NEXT DAY DELIVERY**  
ON ALL ORDERS OVER £25 | UK MAINLAND ONLY

# NEW!

## Compac 2T-77

- Ultra low entry height only 77mm
- Extremely low chassis
- Long-reach chassis
- Quick-approach foot pedal

Order Code: COM2T-77

ONLY  
**£299.95**

# selson

## Hand Held 2 Bag 2.5 Tonne Air Jack

Lifting Height: 130mm - 340mm

Order Code: HBNXLO



ONLY  
**£269.00**

## Hand Held 3 Bag 2.5 Tonne Air Jack

Lifting Height: 155mm - 465mm

Order Code: HBN3



ONLY  
**£289.00**

## Handled 2 Bag 2.5 Tonne Air Jack

Lifting Height:  
130mm - 340mm

Order Code:  
HUSTLERHXLO



ONLY  
**£299.00**

## Handled 3 Bag 2.5 Tonne Air Jack

Lifting Height:  
155mm - 465mm

Order Code:  
HUSTLERH3



ONLY  
**£309.00**

## 1.5 Tonne High Lift Hydraulic Trolley Jack

Min Height: 98mm  
Max Height: 800mm  
Chassis Length: 1050mm  
Weight: 52kg

Order Code:  
COM1.5TC



ONLY  
**£289.00**

## 2 Tonne Low Entry Hydraulic Trolley Jack

Min Height: 80mm  
Max Height: 500mm  
Chassis Length: 730mm  
Weight: 37kg

Order Code:  
COM2TC



ONLY  
**£215.00**

## 3 Tonne Hydraulic Trolley Jack

Min Height: 115mm  
Max Height: 500mm  
Chassis Length: 1015mm  
Weight: 42kg

Order Code:  
COM3TC



ONLY  
**£290.00**

## Compac Replacement Springs

PART No.	DESCRIPTION	PRICE
2TC133	Handle Spring	£8.00
2TC629	Pedal Spring	£13.00



## Compac Rubber Jacking Pad

Order Code:  
1002LF

ONLY  
**£17.45**



0161 476 0900



0161 476 3600



sales@clampcouk.co.uk



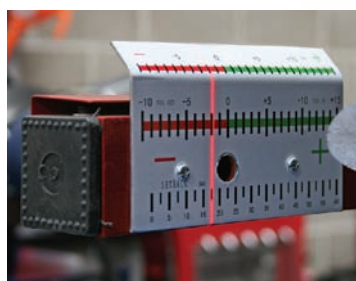
www.clampcouk.co.uk

# 4 WHEEL LASER ALIGNER

- Fast, simple and accurate alignment of both front and rear wheels.
- Optimises vehicle performance and set up after installation or modification of steering or suspension components.
- Simple and fast to use, it is ideal for the busy professional workshop and has a fast return on investment - potentially adding value to every steering or suspension job.
- This fully portable kit is also ideal for track-day set up for the enthusiast.
- Works on practically all cars and light commercials with rim diameters between 330mm(13") and 560mm(22").
- Supplied with steering wheel clamp, wheel turn plates and wheeled storage rack.
- Supplied with comprehensive operating instructions.

## Contents:

Portable Mounting Storage Rack with Castor Wheels, 2 x Laser Alignment Heads, 2 x Wheel Alignment Hangers, 2 x Dished Turning Plates, 1 x Steering Wheel Clamp, 4 x 13" Wheel Rim Spacers.





# JACKING BEAMS

- 2 Tonne & 3 Tonne Capacity Jacking Beams with Arm Extenders & Roller supports. Fully certified and approved to comply with VOSA requirements.
- Features two-stage mechanical safety lock and telescopic finger guards to prevent accidental injury. Supplied with two pairs of aluminium support blocks.
- Beam has spring loaded flat arms with roller bearings - when unloaded, these support the weight of the beam, allowing the entire unit to run smoothly along the pit or ramp, but when loaded, they firmly stabilise the unit.
- Optional hook arms supplied.
- Wide lift configuration meets VOSA recommendation for lifting on jacking point.



SJBEX300

ORDER CODE	CAPACITY	SUPPORT ARM REACH	BEAM LIFT	LOAD ARM REACH	WEIGHT	OFFER PRICE
SJBEX200	2 Tonne	780-1075mm	95-300mm	850-1600mm	94Kg	<b>£549.95</b>
SJBEX300	3 Tonne	780-1075mm	95-300mm	850-1600mm	102Kg	<b>£649.95</b>

- Low profile design Jacking Beam permits use on lifts mounted in pits and commonly used in ATLS.
- Also permits use on vehicles with low ground clearance.
- Fitted with large diameter roller support arms for use on lifts with inner rail type configuration.
- Ultra wide configuration arms extend to 1.6mtr and feature adjustable saddles with interchangeable height posts (optional).
- Tried and tested hydraulic system with double stroke pump and two-stage mechanical safety lock for added safety.



ORDER CODE	CAPACITY	SUPPORT ARM REACH	BEAM LIFT	LOAD ARM REACH	WEIGHT	OFFER PRICE
SJBEX200LP	2 Tonne	720-1075mm	35-380mm	760-1650mm	97Kg	<b>£749.95</b>



0161 476 0900



0161 476 3600



sales@clampcouk.co.uk



www.clampcouk.co.uk

# 2-POST LIFTS

**FINANCE AVAILABLE ON ALL LIFTS.  
PRICE INCLUDES INSTALLATION AND  
12 MONTH WARRANTY**

## AZUR 3.0T 2 POST LIFT WITH BASEFRAME

- Suitable for lifting most passenger cars and car derived vans
- Automatic arm locking
- 5 Year warranty on self lubricating Nylatron operating and safety nuts
- Low minimum lifting pad height of just 95mm
- Foot/toe protection device using an audible buzzer
- Heavy duty base-frame



**ONLY  
£2,650**

Order Code: SF8909



## AZUR 3.2T 2 POST LIFT WITH BASEFRAME

- Suitable for lifting most passenger cars and car derived vans
- Automatic arm locking
- 5 year warranty on self lubricating Nylatron operating and safety nuts
- Low minimum lifting pad height of just 90mm
- Foot/toe protection device fitted to lifting arms

**FREE  
High Lift Pads  
OA/50734**

**ONLY  
£2,850**

Order Code: SF9010/32

## AZUR 3.0T ELECTRO MECHANICAL 2 POST LIFT WITHOUT BASE-FRAME (3PH)

- Suitable for lifting most passenger cars and car derived vans (3 Stage arms)
- Automatic arm locking
- 5 Year warranty on self lubricating Nilatron operating and safety nuts
- Low minimum lifting pad height of 100mm
- Foot / toe protection device
- Clear floor between columns
- Electronic synchronisation between carriages



**ONLY  
£2,995**

Order Code: SF9230/L

## SENTINEL 4.0T HYDRAULIC 2 POST LIFT WITH BASE FRAME + 3 STAGE ARMS

- Electro-hydraulic operation
- Asymmetric lifting arms
- 3 stages for lifting a wide range of vehicles
- Rapid lifting time
- Structural base frame
- Electronically controlled safety latches

**FREE  
High Lift Pads  
OA/50734**



**ONLY  
£3,400**

Order Code: SF9207



## SENTINEL 3.2T 2 POST HYDRAULIC LIFT WITH BASEFRAME

- 3.2 tonne lift suitable for lifting most passenger cars and car derived vans
- Automatic arm locking
- Hydraulic operation
- Low minimum lifting pad height of 90mm
- Foot/toe protection device fitted to lifting arms
- Structural base frame between columns
- Weatherproof option available

**ONLY  
£3,340**

Order Code: SF8935



## AZUR 4.0T ELECTRO MECHANICAL 2 POST LIFT WITHOUT BASEFRAME (3PH)

- Electromechanical operation
- Twin motor
- Clear floor between lifting columns
- Symmetric lifting arms
- Low minimum lifting pad height

**FREE  
High Lift Pads  
OA/50734**

**ONLY  
£4,365**

Order Code: SF9224

# 4-POST LIFTS

## QUADRA 3.5T MOT & SERVICE LIFT

- Electronically controlled safety latches
- Suitable for general MOT servicing & repairs
- Compact space saving design

ONLY  
**£5,525**



FREE  
2.0t Jacking  
Beam

Order Code: SF9436/SR

## QUADRA 3.5T CLASS IV MOT LIFT

- Compact overall dimensions
- Suitable for retro-fitting into existing MOT bays
- Includes recessed radius turning plates
- Suitable for Class IV MOT testing
- Hydraulic and mechanical safety systems with electronic latching

ONLY  
**£5,560**



Order Code: SF9004

## 4.0T ELECTRO-HYDRAULIC 4 POST LIFT

- Suitable for cars and LGV
- General purpose service lift
- Low access height
- Mechanical and hydraulic safety systems
- Audible warning on descent

ONLY  
**£5,740**



FREE  
2.0t Jacking  
Beam

Order Code: SF9084

## 5.0T ELECTRO-HYDRAULIC CLASS VII 4 POST MOT LIFT

- 5.0t lifting capacity
- Electro-hydraulic operation
- Electronic safety locking system
- 5.1m platform length
- Wide access between columns

ONLY  
**£7,800**



Order Code: SF9250



ONLY  
**£9,050**

## QUADRA 6T 4 POST LIFT, 3PH SURFACE MOUNTED

- Suitable for Class VII MOT Testing
- Electro hydraulic operation
- Suitable for most long wheelbase vehicles
- Descent speed control valve
- Mechanical latching system

Order Code: SF8976



ONLY  
**£9,990**

## QUADRA 5.0T CLASS VII MOT/SERVICE LIFT

- Specifically designed for long wheelbase vehicles
- Flush fitting radius turning plates
- Hydraulic and mechanical safety systems

Order Code: SF9265/N



ONLY  
**£13,600**

## LEVIATHAN 8T 4 POST COMMERCIAL VEHICLE LIFT

- Electro hydraulic lift
- Mechanical and hydraulic safety systems
- 24V 'Dead Man' control system
- Compact design for tractor units and smaller trucks
- Acoustic warning system on final descent

Order Code: SF9480

# SCISSOR LIFTS

## 3.0T SHORT PLATFORM LOW RISE SCISSOR LIFT

- 3.0t Lifting Capacity
- Low profile access of 95mm
- Maximum working height of platforms 930mm
- Electro-hydraulic operation
- Fast lifting time of 30 seconds
- Suitable for use in fast fits and tyre shops
- Extendable lifting platforms
- 1 Phase power supply

ONLY  
**£2,495**



Order Code:  
SF9130/1/SI



FREE  
Oil Drainer  
SL/718

## 3.2T LOW PROFILE SCISSOR LIFT

- 3.2 tonne lifting capacity
- Space saving design
- Non-slip platform surfaces
- Very low profile for access of low ground clearance vehicles
- Suitable for most cars and car derived vans

ONLY  
**£4,800**

Order Code: SF8992



0161 476 0900



0161 476 3600



sales@clampcouk.co.uk



www.clampcouk.co.uk



Norbar is the worlds leading torque specialist. Norbar manufacture an extensive range of high quality torque wrenches to torque values from 1N.m to 2000N.m. They are designed & manufactured to exceed international standards for accuracy. All Norbar Torque Wrenches are offered as standard with a quality ratchet. Norbar torque wrenches are built in Britain & the company strives to offer a high quality, value for money product.



### Norbar TruTorque 'TT' Range

In engineering this range, Norbar has paid close attention to accuracy, ease of setting and comfort in use. Accuracy: +/-3% of reading exceeds all international standards for torque wrenches. Each wrench is supplied with a traceable calibration test certificate. Micrometer dual scale for simple and error free setting. Quick and Light adjustment: Adjustment over the entire scale can quickly be achieved and with minimal effort in approximately ten turns. All models feature an adjustment lock to prevent accidental damage of the set torque. The ratchets are reversible and offer a narrow engagement angle of 6 degrees to allow easy positioning in the tight confines of today's vehicles. The handle is both comfortable and durable with a slip resistant soft grip feel. All ratchets are 'push through' which means that the wrenches can provide torque control in both clockwise and anti-clockwise directions.

PART No.	TT200	TT250	TT300
DESCRIPTION	1/2" Sq Dr Dual Scale Torque Wrench		
LENGTH	505mm	560mm	610mm
RATCHET DIA.	46mm	46mm	46mm
WEIGHT	1.2Kg	1.4Kg	1.6Kg
N.M	40-200 N.m	50-250 N.m	60-300 N.m
LBF.FT	30-150 lbf.ft	40-185 lbf.ft	45-220 lbf.ft

ONLY  
**£98.00**

ONLY  
**£99.00**

ONLY  
**£100.00**



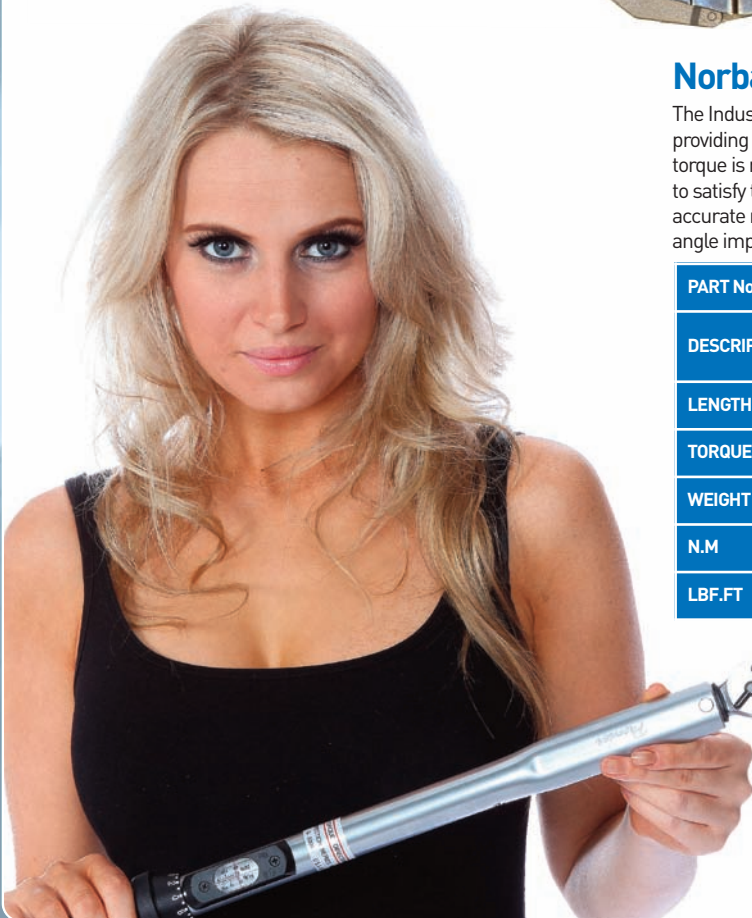
### Norbar Industrial Range

The Industrial range of torque wrenches has a 'break back' action providing an unmistakable signal that can be seen & felt when the set torque is reached. Every wrench is supplied with a calibration certificate to satisfy the requirements of ISO9000. Robust construction gives accurate results, +/-4%, even in arduous working conditions. The break angle improves accuracy by reducing the possibility of over torquing.

PART No.	12009	12009.01
DESCRIPTION	3/4" Sq Dr Commercial Torque Wrench	1" Sq Dr Commercial Torque Wrench
LENGTH	1475mm	1475mm
TORQUE RADIUS	1272mm	1272mm
WEIGHT	7.3Kg	7.3Kg
N.M	30-1000 N.m	30-1000 N.m
LBF.FT	200-750 lbf.ft	200-750 lbf.ft

ONLY  
**£307.50**

ONLY  
**£307.50**



**When was the last time you had your Torque Wrench calibrated?**  
**Can you guarantee your customers wheels are secured correctly?**