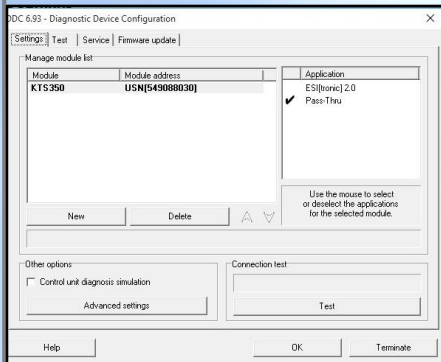
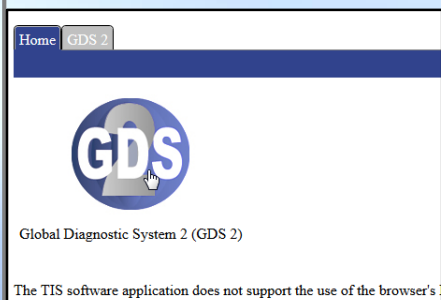
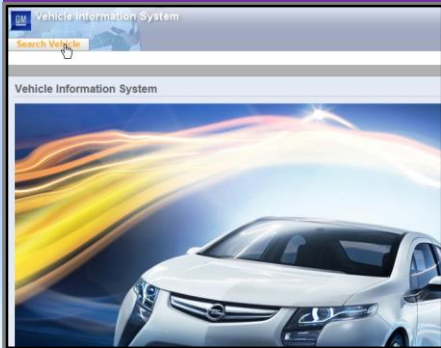


VSTD 38

Course Category: Diagnostics & Test equipment

Level: N/A

Duration: 1 day



Introduction to Pass-Thru Opel / Vauxhall (OV)

Course Overview:

This course is designed for workshop technicians who work on OV brands with a good understanding of diagnostics, but are limited to aftermarket equipment when coding and programming is required. During the course the trainee will carry out the subscription process, download the OV software and configure their KTS as the interface between the vehicle and OV (using their own equipment).

Course Content:

- Introduction to Pass-Thru
- Explain the different subscription types and processes
- Computer set up
- Configure KTS as a Pass-Thru interface (Workshop World)
- Navigation of the OV Portal
- Carry out practical exercises.

Prerequisites:

- Trainees to pre register with OV @ www.vauxhall-infotech.com
- Trainees to bring a Windows 10 Laptop and KTS 560/590 or KTS350 loaded with Windows 10
- Trainees to bring a credit card (or debit card) with them (Subscription Purchase necessary during the course).

Attainment:

- Trainees will have completed a subscription process using their own laptop.
- Loaded the OV software, and configure the KTS interface for Pass-Thru capability.
- Trainees will be able to connect to a vehicle using the KTS as a Pass-Thru device for use with the OV portal, and carry out a comprehensive diagnostic routine.
- Trainees will leave the course with a functional solution to OV Pass-Thru (Subject to successful completion of the pre-requisites above).

Bosch Service Training



BOSCH

Invented for life

Further details on all Bosch training can be found at www.bosch-training-solutions.com